



McGRAW SYSTEMS INTRODUCES



RESEARCH-PROVEN SOFTWARE THAT
IMPROVES BEHAVIORAL HEALTH OUTCOMES

The Problem

Depression is the leading cause of disability around the world.



1 in 5 adults in the US experience a mental illness each year.



1 in 25 adults in the US live with a serious mental illness.

47 MILLION

Adults in the US suffer from
behavioral health issues

48 THOUSAND

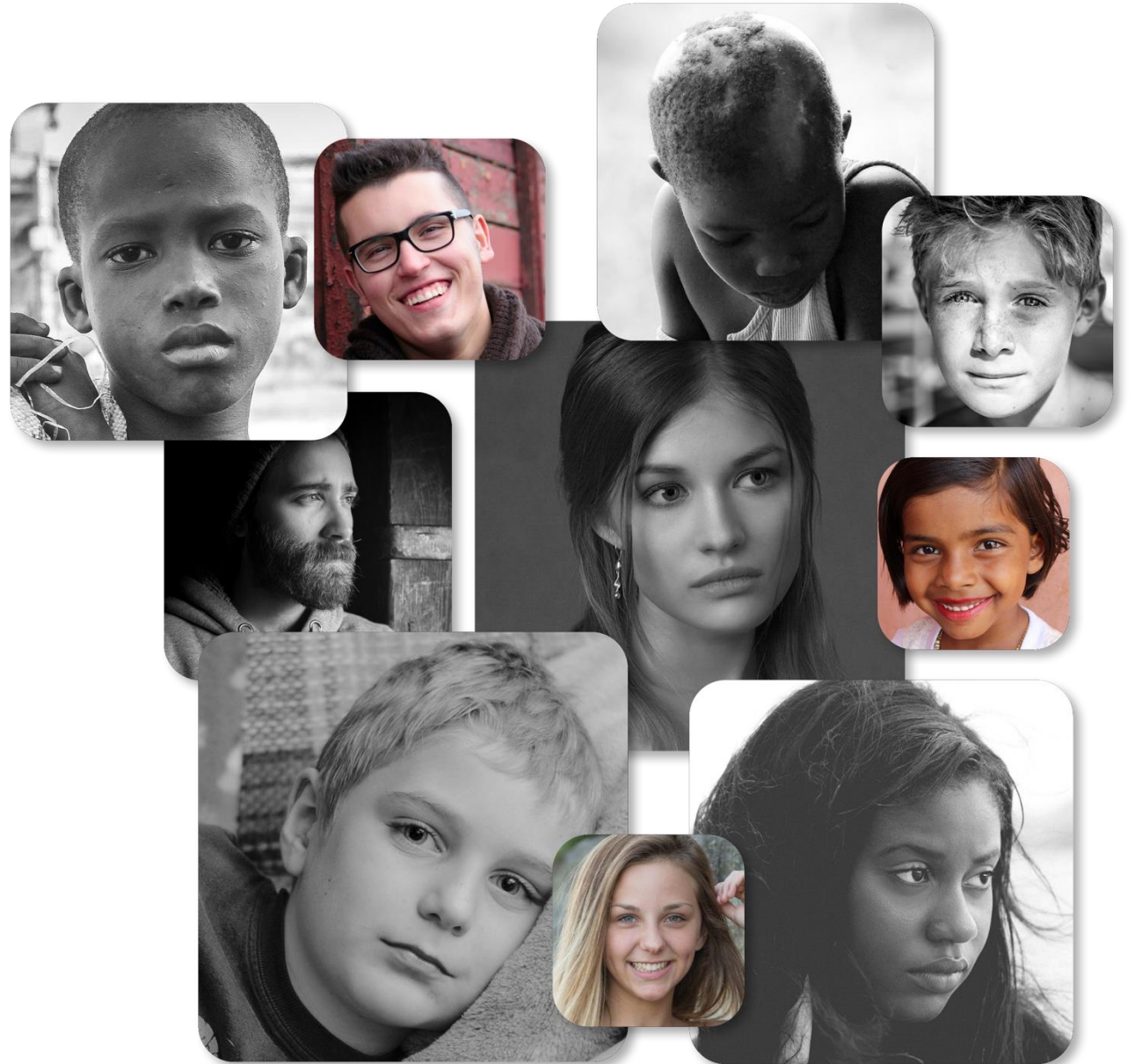
Americans died by suicide
in 2018, with 1.4 Million
suicide attempts.

264 MILLION

People around the world
suffer from depression

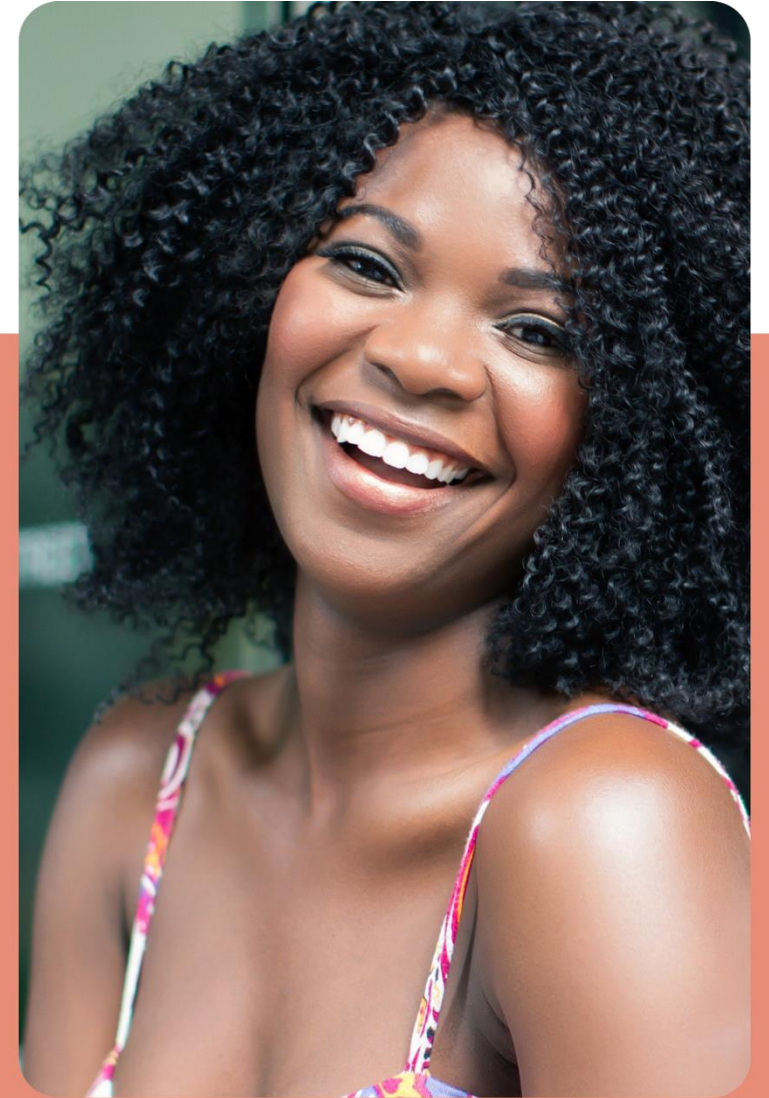
Over 70% of Youths with Major Depression are Still in Need of Treatment

Behavioral health treatment plans are outdated. There are too many hours between counseling sessions that are not accounted for and addressed. Talk therapy sessions miss crucial parts of a patient's daily life such as complex behavioral health symptomology, detailed medication adherence, lifestyle behaviors, and social determinants of health.



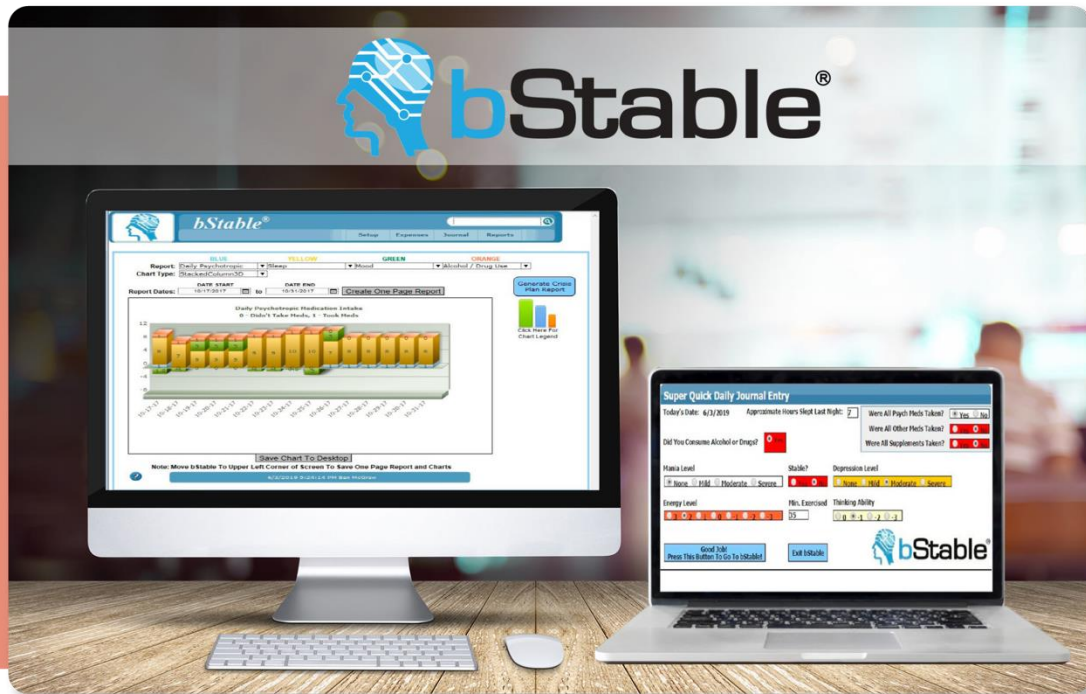
Our Solution

Software that empowers individuals with behavioral health conditions keep track of all aspects of their lives. bStable enables patients to efficiently and proactively communicate with their behavioral healthcare providers to avoid crisis situations and improve behavioral health outcomes.



The Platform

Behavioral health is complicated; every person diagnosed with a DSM-IV category is unique.



Co-morbid, complex, mental, physical, and social conditions are common for individuals with behavioral health needs. A multitude of life factors play into maintaining overall behavioral health. bStable is a robust desktop solution for Mac and PC that handles 100+ aspects of any individual's life in order to maintain behavioral health stability.



bStable Go! is a simplified version of bStable that focuses on behavioral health and social determinants of health. The target audience can be expanded to individuals with co-morbid developmental and intellectual disabilities. bStable Go! includes gamification and robust analytics and runs as an app on the iPhone, iPad, Mac and PC.

How It Works



JOURNAL

Patients keep a detailed journal of life events on a day-to-day basis



RECORD

Patients can record up to 100+ aspects of their mental, physical and social determinants of health to maintain behavioral health stability



ANALYZE

Professionals analyze patient data for future visits and crisis prevention

The data model supports robust patient reporting and data export for additional analysis that can be aggregated across patient populations. Data can be de-identified and used for population health analytics, payer analysis of provider effectiveness or many other analytic use cases.

Our Benefits

PATIENTS

Receive the best behavioral healthcare services at a reasonable cost.

Spend less time providing unimportant information, use the time to work on key issues.

Increase the quality of visits.

Individuals with behavioral health and/or intellectual and/or developmental disabilities and/or substance abuse issues

PROVIDERS

Prove positive behavioral health outcomes for the reimbursement of services.

Gain visibility into client daily progress to determine the best treatment plan.

Avoid costly crisis situations.

Private Providers: Counselors, Therapists, Nurse Practitioners, Psychiatrists, Psychologists, Government Agencies: VA, Social Workers, Case Managers, Non-Profits, Educational Systems, EAPs

PAYERS

Accurately reimburse behavioral healthcare services.

Develop innovative solutions for the behavioral healthcare vertical.

Enable payers, providers and patients to avoid costly crisis situations.

Private Health Insurance, CMS: Medicare, Medicaid

All-In-One Annual Subscription

Yearly bStable Term License	Per Seat
Support <i>Monday thru Friday, 9am to 5pm (excluding holidays)</i> Available via phone, text, email, WebEx	Included
Initial Kick-Off Meeting Staff and client training Includes electronic and print documentation	Included
Ad-Hoc Training During Yearly Term Includes electronic and print documentation	Included
Quarterly Progress Meetings Can coincide with Board Meeting schedule if needed	Included
Deployment Registration code generation bStable instances distributed	Included
Maintenance Patches	Included
Upgrades New versions of bStable	Included
Case Study Draft, edit and production	Included



Milestones

bStable has been fulfilling its mission to aid individuals with behavioral healthcare needs for the past 14 years.

Products

bStable Go! app launched in
March of 2020

bStable desktop app
launched at the 2008 DBSA
National Conference

Individuals

Reach 500+ individual
users by 2010

United States, Canada,
Mexico, Brazil, Argentina,
Caribbean, Australia, South
Africa, Europe and the UK

Enterprise

Reached 4 major
clients within the first 6
years DC Diversity (2011),
Spring Lake Ranch (2012),
Caminar For Mental Health
(2017), Hope Services (2018)

Research

Conducted a 6-month
case study with Caminar For
Mental Health

bStable was proven to
improve the lives of
individuals with SMI



Ben McGraw President & CEO

Having lost his college best friend to suicide in 2003 and witnessing the lives of individuals close to him destroyed by the broken behavioral healthcare system, Ben decided in 2007 to develop a software solution to empower patients to take control of their behavioral healthcare needs.

Ben's goal for the company is to bring hope to the lives of individuals with behavioral healthcare needs, eliminate tragic events such as suicide so everyone can *be stable* and live happy, and productive lives.

Our Clinical Team

bStable has a team of individuals committed to solving the severe mental health crisis worldwide.



Leslie Wolff, RN
VP, Client Services

Psychiatric Registered Nurse

Implemented bStable at Caminar for Mental Health



Lesley Gillian, MSN, RN
Chief Nursing Officer

15 Years in Nursing

With a Psychology Education

SMI Software Market



SMI Software Vendor Target Customers

	PATIENTS	HEALTHCARE PROVIDERS	PAYERS	EDU INDUSTRY	RESEARCHERS	EAP'S	OTHER
affigo.io	●						
CareClinic	●						
innerhour		●		●		●	
MONSENDO	●	●			●		
bStable	●	●	●	●	●	●	●
moodpath	●						
SARDAA	●			●		●	●
eMoods	●						
camh	●	●		●			
SANVELLO™	●						

Why McGraw Systems?

Company History

In business since 2007 addressing the SMI population with innovative software solutions.

Positioned to be a leader in the \$4B global mental health software market by 2027 growing at a 23.7% CAGR.

Proven Product

Research study conducted with the leading mental health agency on the West Coast – Caminar for Mental Health backs the effectiveness of bStable

Products are second to none as far as the ability to communicate disease state information between patients and providers, improve the quality of office visits and achieve better mental health outcomes.

Marque Customer

Used by the largest outpatient mental health clinic for people with developmental disabilities and mental illness on the West Coast - Hope Services.

Future Product Direction

Counseling Portal

Integrate with behavioral health online counseling portals (BHOCs)

Record System

Integrate with electronic health record systems (EHRs)

Research Study

Conduct research study showing positive behavioral health outcomes from bStable integrated with a BHOC and/or EHR

Functionality

Expand core bStable functionality

Health Analytics

Expand bStable population health analytic Functionality

Market Sizing

Global behavioral health software and U.S. SMI software growth and projections over a ten-year period.

Global BH Software 2018 Value

\$588 Million

Global BH Software 2028 Value

\$3.9 Billion

U.S. SMI Software 2018 Value

\$43.7 Million

U.S. SMI Software 2028 Value

\$347.7 Million

Both markets have a projected growth of over 20% over a ten-year period and are continuing to grow at a rapid pace.

Get in Touch

Ben McGraw

President & CEO,
McGraw Systems LLC

Tel: 844.727.8225

ben@mcgrawsystems.com

